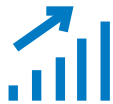


DELLTechnologies

WYSE 3040

Security and performance in a compact design



PERFORMANCE TO POWER YOUR WORKDAY

Featuring Intel® quad core processors, this power-efficient thin client* delivers business class performance, native support for dual-display setup and robust connectivity for confident connectivity and collaboration.



DEPLOY WITH EASE

Deploy in about a minute¹ and autoconfigure in less than 10². With unified end-to-end deployment and management from Wyse Management Suite manage from the cloud or the datacenter.



SECURITY BUILT-IN

End to end security starts at the endpoint. Get the most secure thin client with Dell-exclusive Wyse ThinOS³.



EFFICIENT PRODUCTIVITY

The smallest and lightest thin client from Dell* is ideal for space-constrained environments. Several custom designed mounting solutions help maximize work space set up and deliver an all-in-one experience.

Accelerate your cloud strategy with Wyse cloud clients designed to enhance your virtual workspaces with ultimate security and intelligent unified management. Learn More at Delltechnologies.com/Wyse

Recommended Accessories

WYSE 3040

AT-THE-DESK / REMOTE



DELL 24 MONITOR P2419H WITH DELL DUAL MONITOR STAND | MDS19

Optimize your dual monitor setup to improve productivity and reduce desktop clutter.



DELL P-SERIES MONITOR MOUNT

Completely open your workspace with a behind-the-monitor mounting solution.



WYSE 3040 WALL MOUNT AND E-SERIES MONITORS

Allows the Wyse 3040 to be mounted to select Dell E-Series displays.



DELL PRO STEREO HEADSET | UC350

Hear every word clearly on your next call with the Dell Pro Stereo Headset, optimized to provide in-person call quality and certified for Microsoft® Skype® for Business.



DELL WIRELESS KEYBOARD AND MOUSE | KM636

With a compact mouse and full-sized keyboard for accurate typing, this keyboard mouse combo offers the convenience of wireless and clutter-free performance.



DELL SMART CARD KEYBOARD | KB813

Access secured endpoints or networks directly from your keyboard with an integrated smart card reader for easy authentication at your fingertips.

Meet the Wyse Family

WYSE SOFTWARE

OPERATING SYSTEMS



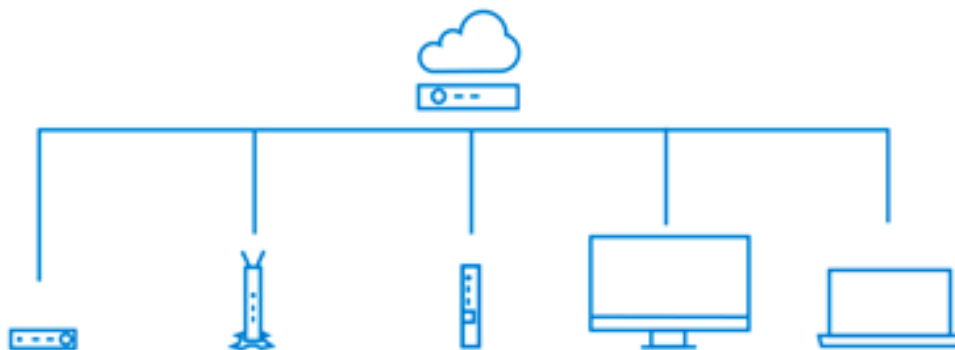
Wyse ThinOS

Enjoy peace of mind with Dell's exclusive Wyse ThinOS, the most secure thin client operating system³. With a closed architecture, system hardening to limit attack surfaces, an unpublished API, encrypted data and files exclusively packaged by Dell, Wyse ThinOS is virus and malware resistant. Experience effortless setup, configuration and management and a rich user experience with the latest high performance desktop virtualization protocols. Wyse ThinOS supports most popular unified communications solutions to keep users at their productive best. Ready to connect to Citrix®, Microsoft®, VMware® and Amazon WorkSpaces environments⁴ right out of the box, this light weight firmware base about the size of a digital photograph has minimal overhead and a rapid boot time delivering instant-on user productivity.

WYSE MANAGEMENT SUITE

From zero to productivity instantly, gain instant control with Wyse Management Suite Pro on Public Cloud⁵. Experience fast hands-free deployment and effortless enterprise management with Wyse Management Suite. This efficient hybrid cloud management solution centrally configures, monitors and manages Wyse endpoints and scales from one to hundreds of thousands of devices to meet all levels of deployment.

With secure, HTTPS-based communications and active directory authentication for role-based administration, Wyse Management Suite keeps Wyse endpoints always up to date and the mobile app allows IT to view critical alerts, notifications on the dashboard and send real time commands with one tap at any time.



1 - Based on Dell internal analysis, March 2020, measuring Wyse ThinOS automated configuration from Wyse Management Suite or a file server. Dell legal AD#G19000215.

2 - Based on Dell internal analysis, March 2020, measuring manual configuration of Wyse ThinOS via OOB or automated deployment from Wyse Management Suite or a file server. Dell legal AD#G19000215.

3 - Based on Dell internal analysis of Wyse ThinOS v. competitive products, March 2020

4 - Wyse ThinOS 8.6 is ready to connect to Citrix®, Microsoft® and VMware® environments. Wyse ThinOS 8.6 with PCoIP is required for accessing Amazon Workspaces and VMware environments using PCoIP. Wyse ThinOS 9.1 is available as a web download and provides access to Citrix®, Microsoft® VMware® and Amazon Workspaces environments. Customers upgrading from 8.6 without PCoIP will not be eligible to PCoIP after upgrade.

5 - License activation required

Built for business

Dell Technologies Software Solutions Flexible. Simple. Secure.



DEPLOY

Deploy in about a minute¹ and autoconfigure in less than 10². With simplified setup, configuration and management, Wyse thin clients can be deployed right out-of-the box. Dell services portfolio for Wyse thin clients helps you streamline deployment so you can focus on innovation.



SECURE

Get the most secure thin client operating system with Dell-exclusive Wyse ThinOS³. With a closed architecture, system hardening to limit attack surfaces, unpublished APIs and encrypted data and files exclusively packaged by Dell, Wyse ThinOS is virus and malware resistant.



MANAGE

With unified end-to-end deployment and management from Wyse Management Suite (WMS), you can manage from the cloud and/or datacenter and scale easily from one to hundreds of thousands of devices.



SUPPORT

Let us make hardware and software support easy. ProSupport offers 24x7 access to in-region advanced technology experts who contact you when critical issues arise⁷, so you can focus on the strategic work that moves your business ahead.

1 - Based on Dell internal analysis, March 2020, measuring Wyse ThinOS automated configuration from Wyse Management Suite or a file server. Dell legal AD#G19000215

2 - Based on Dell internal analysis, March 2020, measuring manual configuration of Wyse ThinOS via OOBE or automated deployment from Wyse Management Suite or a file server. Dell legal AD#G19000215.

3 - Based on Dell internal analysis of Wyse ThinOS v. competitive products, March 2020

Features & Technical Specifications

WYSE 3040

Feature	Wyse 3040 thin clients Technical Specifications
Processor Options ¹	Intel® Atom x5-Z8350 (Quad Core 1.44 GHz)
Operating System options	Wyse ThinOS 8.6 Wyse ThinOS 8.6 with PCoIP Wyse ThinOS 9.1 (web download)
Server OS Infrastructure Support	VMware Horizon Citrix Virtual Apps and Desktops (formerly XenDesktop/XenApp) Microsoft® Azure (requires ThinOS 9.1) Microsoft® Windows Virtual Desktops (requires ThinOS 9.1) Microsoft® Windows Terminal Server Amazon WorkSpaces (requires ThinOS 8.6 with PCoIP or ThinOS 9.1 option)
Memory ^{1,2,3}	2GB DDR3L 1600MHz, soldered down
Storage ^{1,3}	ThinOS: 8GB or 16GB eMMC FLASH, soldered down
Display	Up to two displays @ 2560x1600@60Hz
Graphics	Built-in Graphics controller. Three independent frame buffers. DirectX 11.1 compatible, OpenGL 4.3, OpenCL 1.2, OpenGL ES 3.0
Ports and Slots	3 x USB 2.0 (1 front/2 rear) 1 x USB 3.2 Gen 1 (1 front) 2 x DisplayPort™ 1.1a 1 x Audio-mic combo jack 1 x 1Gb/s RJ45
Security Options	Built-in chassis security lock slot (cable sold separately). Optional Smart Card keyboard.
Security Software / Systems Security Management	Wyse Management Suite Standard Optional Wyse Management Suite Pro
Networking ^{1,6}	Integrated Realtek® Ethernet LAN 10Mb/100Mb/1Gb Copper RJ45, Optional Azurewave AW-CM389MA Dual band 802.11 a/b/g/n/ac wireless with Bluetooth 4.0, internal antennas. Wake on LAN
Audio	1 x 3.5mm audio-mic combo jack (front)
Power	External 24-Watt Power Adapter. 5.5mm barrel.
Orientation	Horizontal
Dimensions	Height 27.94 mm x Width 101.6 mm x Depth 101.6 mm Height: 1.1" x Width: 4.0" x Depth: 4.0"
Weight	0.24 kg (0.53 lbs)
Warranty and Service ^{5,9}	Three-year Limited Hardware Warranty ⁵ . Optional 3-year Dell ProSupport™ for premium support from expert technicians and 24x7 availability and Accidental Damage Service. 4-year and 5-year service and support options ⁹
Configuration Services	Factory Image load, BIOS Customization, Hardware Customization, Asset Tagging and Reporting.
Environmental, Ergonomics & Regulatory Standards ^{11,12}	Wyse 3040 Regulatory Model N10D. Regulatory Type N10D001. Environmental Standards (eco-labels): ENERGY STAR qualified. EPEAT Registered. WEEE. RoHS. Trade Agreements Acts (TAA) configurations available. Halogen free, except external power supply. Please see your local representative or www.dell.com for specific details.

Features & Technical Specifications

WYSE 3040

WYSE 3040 THIN CLIENT RECOMMENDED OPTIONS & ACCESSORIES¹

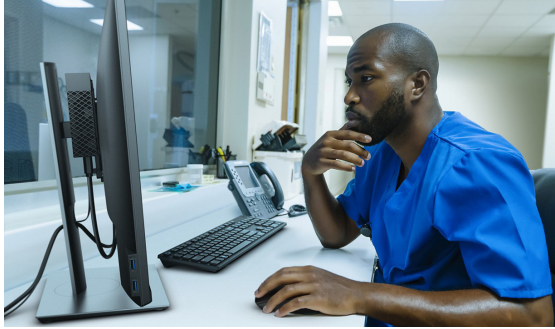
Management Software	Dell Wyse Management Suite Standard edition - download now Wyse Management Suite free version Dell Wyse Management Suite Pro edition (optional) - Start Free trial																								
Monitors	<table border="0"> <tr> <td>Dell 19 Monitor E1916H, E1920H</td> <td>Dell 19 Monitor P1917S</td> </tr> <tr> <td>Dell 20 Monitor E2016H, E2020H</td> <td>Dell 20 Monitor P2017H</td> </tr> <tr> <td>Dell 22 Monitor E2218HN, E2220H</td> <td>Dell 22 Monitor P2217, P2217H, P2219H, P2219HC</td> </tr> <tr> <td>Dell 23 Monitor E2318H</td> <td>Dell 23 Monitor P2317H, P2319H</td> </tr> <tr> <td>Dell 24 Monitor E2417H, E2420H</td> <td>Dell 24 Monitor P2415Q</td> </tr> <tr> <td>Dell 27 Monitor E2720H</td> <td>Dell 24 Touch Monitor P2418HT</td> </tr> <tr> <td>Dell UltraSharp 24 Monitor U2415</td> <td>Dell 24 Monitor P2417H, P2418D, P2419H, P2419HC, P2421D</td> </tr> <tr> <td>Dell UltraSharp 24 Monitor U2419H, U2419HC</td> <td>Dell 27 Monitor P2717H, P2719H, P2719HC, P2720D</td> </tr> <tr> <td>Dell UltraSharp 25 Monitor U2518D</td> <td>Dell 34 Curved Monitor P3418HW</td> </tr> <tr> <td>Dell UltraSharp 27 Monitor U2718Q, U2719D</td> <td>Dell Medical Review 24 Monitor MR2416</td> </tr> <tr> <td>Dell UltraSharp 27 USB-C Monitor U2719DC</td> <td></td> </tr> <tr> <td>Dell UltraSharp 27 4K USB-C Monitor U2720Q</td> <td></td> </tr> </table>	Dell 19 Monitor E1916H, E1920H	Dell 19 Monitor P1917S	Dell 20 Monitor E2016H, E2020H	Dell 20 Monitor P2017H	Dell 22 Monitor E2218HN, E2220H	Dell 22 Monitor P2217, P2217H, P2219H, P2219HC	Dell 23 Monitor E2318H	Dell 23 Monitor P2317H, P2319H	Dell 24 Monitor E2417H, E2420H	Dell 24 Monitor P2415Q	Dell 27 Monitor E2720H	Dell 24 Touch Monitor P2418HT	Dell UltraSharp 24 Monitor U2415	Dell 24 Monitor P2417H, P2418D, P2419H, P2419HC, P2421D	Dell UltraSharp 24 Monitor U2419H, U2419HC	Dell 27 Monitor P2717H, P2719H, P2719HC, P2720D	Dell UltraSharp 25 Monitor U2518D	Dell 34 Curved Monitor P3418HW	Dell UltraSharp 27 Monitor U2718Q, U2719D	Dell Medical Review 24 Monitor MR2416	Dell UltraSharp 27 USB-C Monitor U2719DC		Dell UltraSharp 27 4K USB-C Monitor U2720Q	
Dell 19 Monitor E1916H, E1920H	Dell 19 Monitor P1917S																								
Dell 20 Monitor E2016H, E2020H	Dell 20 Monitor P2017H																								
Dell 22 Monitor E2218HN, E2220H	Dell 22 Monitor P2217, P2217H, P2219H, P2219HC																								
Dell 23 Monitor E2318H	Dell 23 Monitor P2317H, P2319H																								
Dell 24 Monitor E2417H, E2420H	Dell 24 Monitor P2415Q																								
Dell 27 Monitor E2720H	Dell 24 Touch Monitor P2418HT																								
Dell UltraSharp 24 Monitor U2415	Dell 24 Monitor P2417H, P2418D, P2419H, P2419HC, P2421D																								
Dell UltraSharp 24 Monitor U2419H, U2419HC	Dell 27 Monitor P2717H, P2719H, P2719HC, P2720D																								
Dell UltraSharp 25 Monitor U2518D	Dell 34 Curved Monitor P3418HW																								
Dell UltraSharp 27 Monitor U2718Q, U2719D	Dell Medical Review 24 Monitor MR2416																								
Dell UltraSharp 27 USB-C Monitor U2719DC																									
Dell UltraSharp 27 4K USB-C Monitor U2720Q																									
Display Adapters¹⁵	Dell DisplayPort to Single Link DVI (1920x1200) Adapter Dell Adapter DisplayPort to HDMI 2.0 (4K) Dell DisplayPort to VGA Adapter																								
Mounting Options	Wyse 3040 Behind the Monitor Mount Bracket for E-Series Monitors Wyse 3040 Behind the Monitor Mount Bracket for P-Series Monitors Dell Dual Monitor Stand MDS19 Dell Dual Monitor Arm MDA20 Dell Single Monitor Arm Stand MSA14 Dell Single Monitor Arm MSA20																								
Keyboards	Dell Multimedia Keyboard KB216 (default configuration) Dell Smartcard Keyboard KB813 Dell Wireless Keyboard and Mouse KM636 Dell Palm Rest for KB216 and KM636 Dell Multi-Device Wireless Keyboard and Mouse Combo KM7120W																								
Mouse	Dell MS116 Wired Mouse (default configuration) Dell Laser Wired Mouse - MS3220 Dell Premier Wireless Mouse - WM527 Dell Mobile Wireless Mouse - MS3320W Dell Mobile Pro Wireless Mice - MS5120W Dell Multi-Device Wireless Mouse - MS5320W																								
Audio	Dell Pro Stereo Headset UC150 Dell Pro Stereo Headset – Skype for Business UC350 Dell Stereo Soundbar AC511M Dell Pro Stereo Soundbar - AE515M																								
Printers	Dell Color Printer- C2660dn Dell Multifunction Printer E515dn Dell Color Multifunction Printer E525w																								

WYSE 3040 THIN CLIENT SOFTWARE FEATURES

OS OPTION	Wyse ThinOS 8.6	Wyse ThinOS 8.6 with PCoIP	Wyse ThinOS 9.1 ¹⁴
MICROSOFT	RDP 10	RDP 10	Microsoft WVD
CITRIX	Citrix Receiver 14 w/RTME	Citrix Receiver 14 w/RTME	Citrix Workspace app with RTME
VMWARE	Horizon 5 (RDP and Blast)	Horizon 5 (RDP, Blast, and PCoIP)	Horizon 2006 (RDP, Blast, and PCoIP)
Certifications	Citrix HDX Ready	Citrix HDX Ready	Citrix HDX Ready
	VMware Certified	VMware Certified	VMware certified

Wyse thin clients designed for the way people work

Wyse thin clients address the needs of regulated industries to ensure higher security and more manageability.



HEALTHCARE

Healthcare professionals need to securely access both their applications and patient records, regardless of location or available station. The Wyse 3040 thin client allows you to focus on your patients with improved security, simpler administration and better performance.

EDUCATION

Within the education sector, instructors need to instruct and students need to learn – just as business professionals need to do business.

The Wyse 3040 can empower your school, college or university – through improved security, simpler administration and affordable performance for educators and students.



GOVERNMENT SERVICES

Government IT systems come with their own unique set of challenges, but at the forefront are security and strict compliancy requirements. The Wyse 3040 thin client provides government, local, regional and federal agencies a secure platform, which enables IT to meet strict government mandates to access highly sensitive information. Employees can access their cloud environment securely, while data is protected from the datacenter to the edge.



FINANCIAL SERVICES

The technical needs of financial services are demanding – they need to fit the business and comply with policies. Data accuracy, integrity and access speed are integral, and systems failures or delays could be damaging to a company's reputation or incur penalties.

The Wyse 3040 is a reliable and manageable endpoint to keep your company's data at minimal risk. Ensure a positive employee experience with support for up to six display to view more information on screen without minimizing or closing applications.





WYSE 3040

Affordable performance for every task.



Composite audio jack USB 2.0 USB 3.2 Gen 1



Power DisplayPort USB 2.0 RJ 45 1Gbps

+ Based on Dell internal analysis, December 2018. Dell legal AD#G17000070 and AD#G17000077.

1. Offering may vary by region. Some items may be available after product introduction. For complete details, refer to the Technical Guidebook published on www.dell.com.

2. A 64-bit operating system is required to support 4GB or more of system memory.

3. GB means 1 billion bytes and TB equals 1 trillion bytes; significant system memory may be used to support graphics, depending on system memory size and other factors

4. GB means 1 billion bytes and TB equals 1 trillion bytes; actual capacity varies with preloaded material and operating environment and will be less.

5. Limited Hardware Warranty: For copy of Limited Hardware Warranty, write Dell USA LP, Attn: Warranties, One Dell Way, Round Rock, TX 78682 or see www.dell.com/warranty

6. Wireless antenna and module available only at time of system purchase.

7. SupportAssist not available on Linux, Windows 10S, Windows RT, Windows 10 CMIT Government Edition, Android, Ubuntu or Chrome based products. SupportAssist automatically detects and proactively alerts Dell to: operating system issues, software upgrades, driver updates and patches, malware, virus infected files, failures of hard drives, batteries, memory, internal cables, thermal sensors, heat sinks, fans, solid state drives and video cards.

8. For complete listing of declarations and certifications, refer to the Dell Regulatory and Environmental Datasheet found in the Manuals section of Product Support information at www.dell.com/support/home/us/en/19.

9. Dell Services: Availability and terms of Dell Services vary by region. For more information, visit www.dell.com/servicesdescriptions.

10. Weights vary depending on configuration and manufacturing variability

11. Please refer to www.epeat.net for specific country registration rating and participation.

12. For complete listing of declarations and certifications, refer to the Dell Regulatory and Environmental Datasheet found in the Manuals section of Product Support information www.dell.com/support/home/us/en/19.

13. Contact your Dell Sales resource for a complete listing of cable adapters.

14. Wyse ThinOS 9.1 is available as a web download and provides access to Citrix®, Microsoft® VMware® and Amazon Workspaces environments.

Customers upgrading from 8.6 without PCoIP will not be eligible to PCoIP after upgrade.